

20

PARK COUNTY
COMMUNITY
FOUNDATION

22

YEAR IN REVIEW

We connect caring people to community needs



WE LEARN

Through research, networking, and community conversations we cultivate a deeper knowledge about the issues that shape our community.

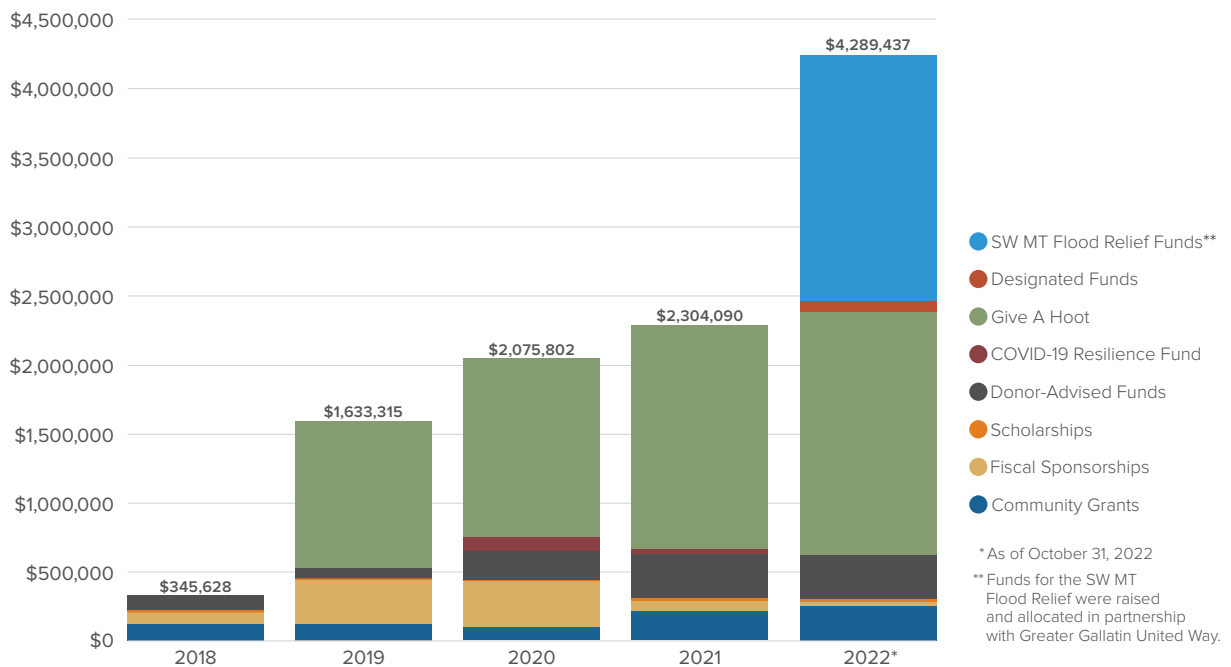
WE ENGAGE

We lead collaborative engagement by convening the community and providing professional development to support nonprofits addressing Park County's most pressing challenges and opportunities.

WE GIVE

With a keen understanding of the issues, we inspire community-based philanthropy and allocate funding to organizations serving Park County.

DISTRIBUTIONS TO THE COMMUNITY: 2018-2022*



We believe that Park County's challenges can be solved through mutual understanding, collaboration, and a robust culture of philanthropy. Your financial support allows us to continue to serve Park County with an eye toward the future.

Please consider a gift to the Park County Community Foundation today—by mail or online at pccf-montana.org.

For information about making legacy gifts to PCCF's permanent endowment, establishing a planned gift, or starting a donor-advised fund, please contact:

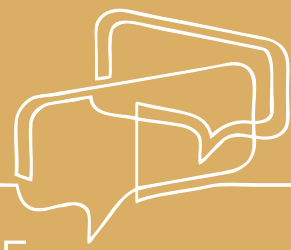
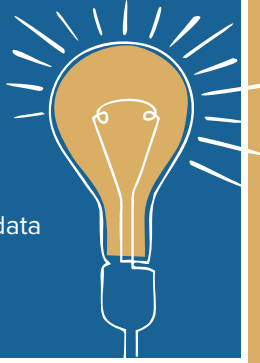
Annie Beaver, *Finance Director*
 e Annie.Beaver@pccf-montana.org | t (406) 224-3920

In 2022, for every \$1 we spent to operate the Park County Community Foundation, we distributed \$10 back into the community.

LEARN

We Will Park County: State of the County Report

- We Will Park County is a citizen-informed initiative to help our citizens, organizations, and governments determine their future by creating a common vision. The 2022 Community Survey captures sentiment from more than 800 residents revealing shared values about the challenges facing Park County.
- The 2022 We Will Park County Report combines these opinions along with key data points we investigated in order to provide insight into the confluence between our public perceptions and what the data tells us our future might hold.



ENGAGE

Nonprofit ACTION

- Nonprofit ACTION is a program designed to meet the professional development needs of Park County nonprofits by providing training and resources.
- The Park County Community Foundation is uniquely positioned to address the professional development needs of local nonprofits by delivering services that are relevant to a range of nonprofit providers at different levels of experience and designed to generate a collaborative culture among Park County nonprofit professionals, board members, and volunteers.

We Will Park County: 2022 Community Conversation

- The We Will Park County 2022 Community Conversation convened county residents to explore the future they want by annually presenting facts and opinions on the most important issues facing Park County.
- The goal is to identify where our challenges are most acute, where we disagree, and—more importantly—where we agree.

GIVE

SW MT Flood Relief Fund - Serving Park County

- In partnership with the Greater Gallatin United Way, PCCF launched the SW MT Flood Relief Fund and raised more than \$2.7 million for people in Park County who were impacted by the historic flooding along the Yellowstone River.
- To date, more than \$2 million has been granted to individuals, businesses, and nonprofits across Park County. Funding is focused in three areas: Severe Flood Damage, Economic Relief to North Yellowstone Communities, and Nonprofit Relief & Resiliency Grants.

GIVE A HOOT

- The 4th annual GIVE A HOOT Community Giving Challenge inspired over \$1.7 million from more than 3,100 individual gifts to 77 Park County nonprofits.
- Since 2019, GIVE A HOOT has helped raise over \$5.7 million to 90 local nonprofits serving Park County.

2022 Community Grants

- Through our Community Grants Program, PCCF has allocated over \$11 million in grants between 2007 and 2022.
- In 2022, \$187,200 was distributed to 28 Park County-based projects that aligned with advancing the five We Will Park County issue areas.



Board of Directors

Jeff Welch, Chair, *Shields Valley* | Bruce C. McKnight, Vice-Chair, *Paradise Valley*
Victoria Schilling, Secretary, *Shields Valley* | Donald B. Gimbel, Treasurer, *Paradise Valley*
Julie Anderson, *Tom Miner Basin* | Sky Anderson, *Shields Valley*
Michael P. Atkinson, *Shields Valley* | Lara Birkes, *Paradise Valley*
Tim Cayen, *Paradise Valley* | Kenneth C. Cochrane, *Paradise Valley*
Bob Hove, *Paradise Valley* | Catherine Lane, *Livingston*
Matt Strong, *Paradise Valley* | Megan Watts, *Shields Valley*

Staff

Gavin Clark, Executive Director
Barb Oldershaw, Program Director
Annie Beaver, Finance & Administration Director

PARK COUNTY COMMUNITY FOUNDATION

PO Box 2199 | Livingston, MT 59047
(406) 224-3920
office@pccf-montana.org

Sign up for our e-newsletter, or donate
online at www.pccf-montana.org
Follow us on Facebook!